

CAPTAIN CROZIER'S SPITZBERGEN HERBARIUM

Reg. No. #457

Presented to the Natural History Section of the National Museum, Dublin, by Mr Moss; December 1923

'Collected by Captn Crozier when with Captn Parry - Captn Crozier was lost with Sir John Franklin'.

Series I: flat sheets with one specimen attached to each; numbered in ink by B. Morley

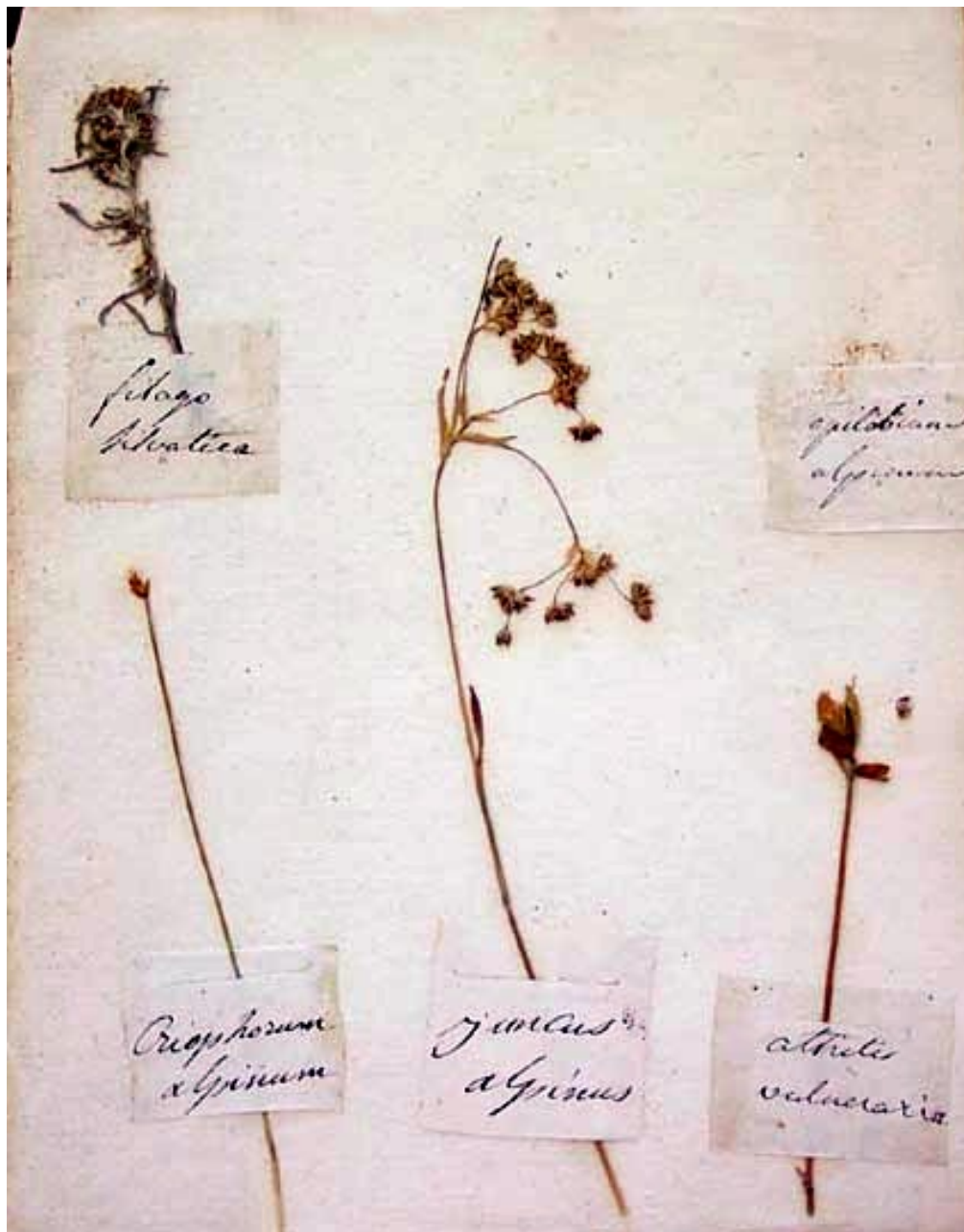
Francis Rawdon Moira Crozier (c.1796 - 1848), captain in the Royal Navy, accompanied Captain William Edward Parry on three cruises in the Arctic Ocean between 1821 and 1827. In 1845, he again sailed into Arctic waters on H.M.S. Terror, accompanying Sir John Franklin on a voyage that was to end with the deaths of all and enduring mysteries. His only hitherto recorded contribution to natural history was the assembly of a collection of birds, obtained in the Antarctic region during between 1839 and 1843 - these were presented to the Belfast Natural History and Philosophical Society.

As his Christian names indicate, Capt. Crozier was a native of County Down, and was descended from the Rawdon family of Moira. In December 1923 a small herbarium collections attributed to Crozier was presented to the Natural History Section of the National Museum, Dublin, by Mr Moss; it was registered under number 457. In 1970 this material was transferred with the entire botanical collections of the museum to the National Botanic Gardens, Glasnevin. Dr Brian Morley began cataloguing the Crozier collection in the early 1970s but did not complete the task; the present author has recently investigated this collections and identified, as far as is possible, the specimens in it.

Various inscriptions accompany this hortus siccus, and describe the collections as 'Collected by Captn Crozier when with Captn Parry - Captn Crozier was lost with Sir John Franklin'. The specimens extant comprise two distinct and obviously separate groups of specimens; the first series (with 7 specimens) includes the only provenanced one, and the second series (with 90 specimens) may represented cultivated plants Series I: flat sheets with one specimen attached to each; numbered in ink by B. Morley.

- 1.
2. *Saxifraga oppositifolia*
3. *Dryas octopetala*
- 4.
5. *Papaver nudicaule*
6. *Cerastium*
7. '*Arenaria Rubella* Spitzbergen 1827'
8. *Ranunculus*
9. *Potentilla*

Series II: folded sheets with several specimens representing different species inside each folio; numbered in pencil by E. C. Nelson.



CROZIER 1

- Filago silvatica
- Eriophorum alpinum
- Juncus alpinus
- Anthyllis vulneraria
- Epilobium alpinum [specimen missing]



CROZIER 2

Primula vilosa
Genista germanica
Actea spicata
Adonis vernalis
Adonis aestivalis



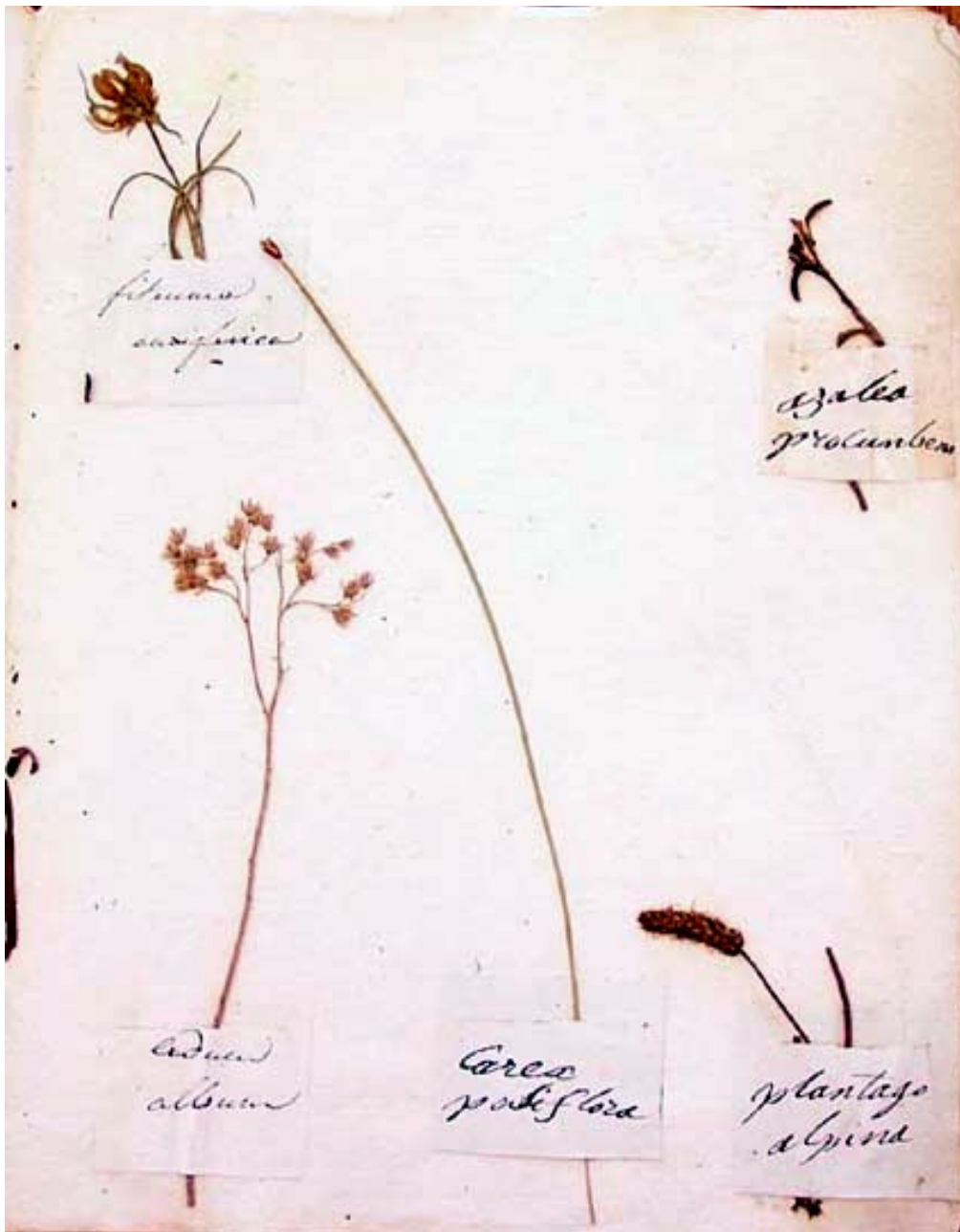
CROZIER 3

- Polypodium filix-femina
- Lilium bulbiferum
- Juncus luteus
- Erica vulgaris
- Pedicularis rostrata



CROZIER 4

- Silene acaulis
- Viola biflora
- Grisentemum alpinum
- Juncus jaquinii
- Bupleurum stelatum



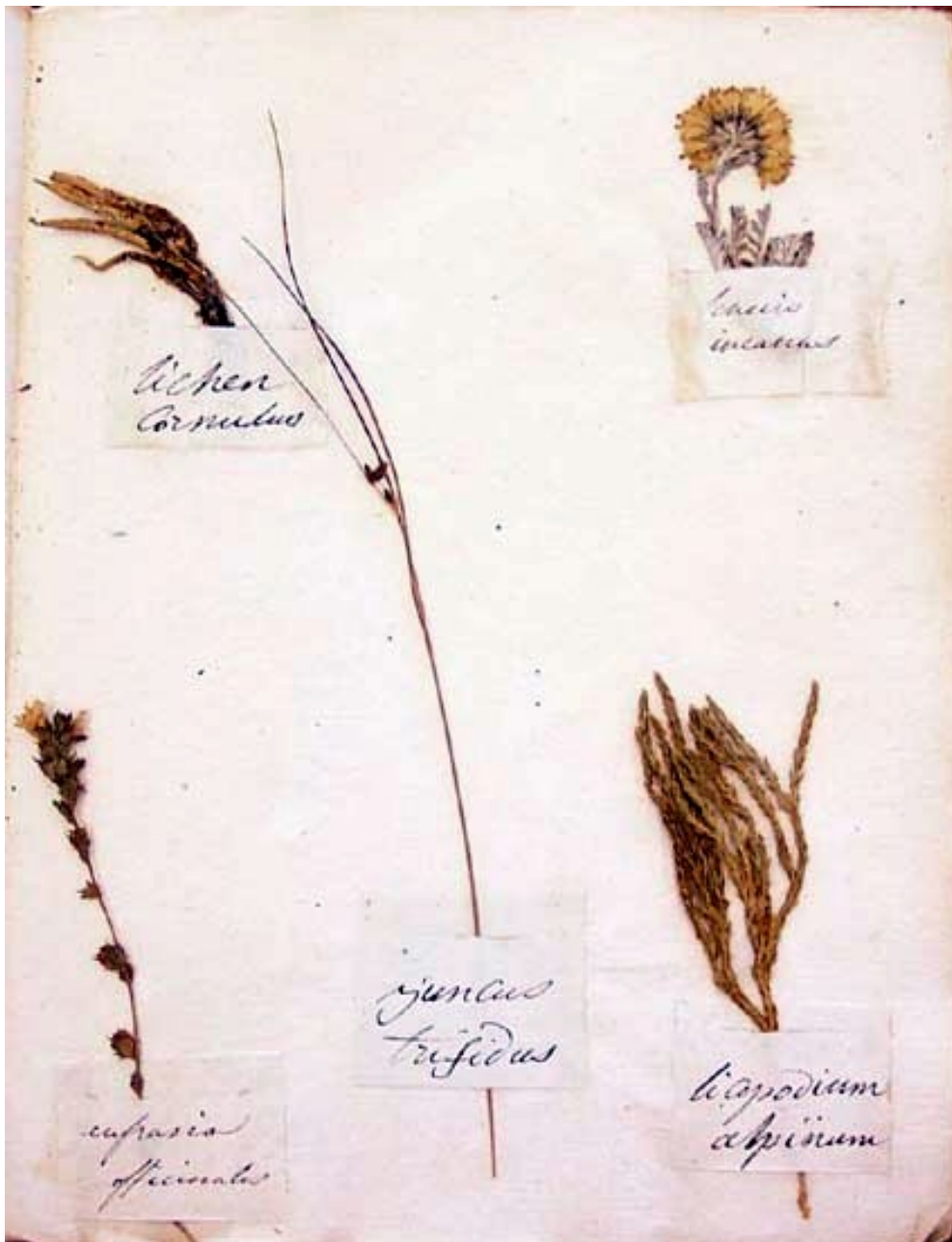
CROZIER 5

Phyteuma
Azalea procumbens
Cedum album
Carex posiflora
Plantago alpina



CROZIER 6

- Erica carnea [specimen missing]
- Gentiana acaulis
- Rosa alpina
- Eryngium alpinum
- Polytrichum juniperinum



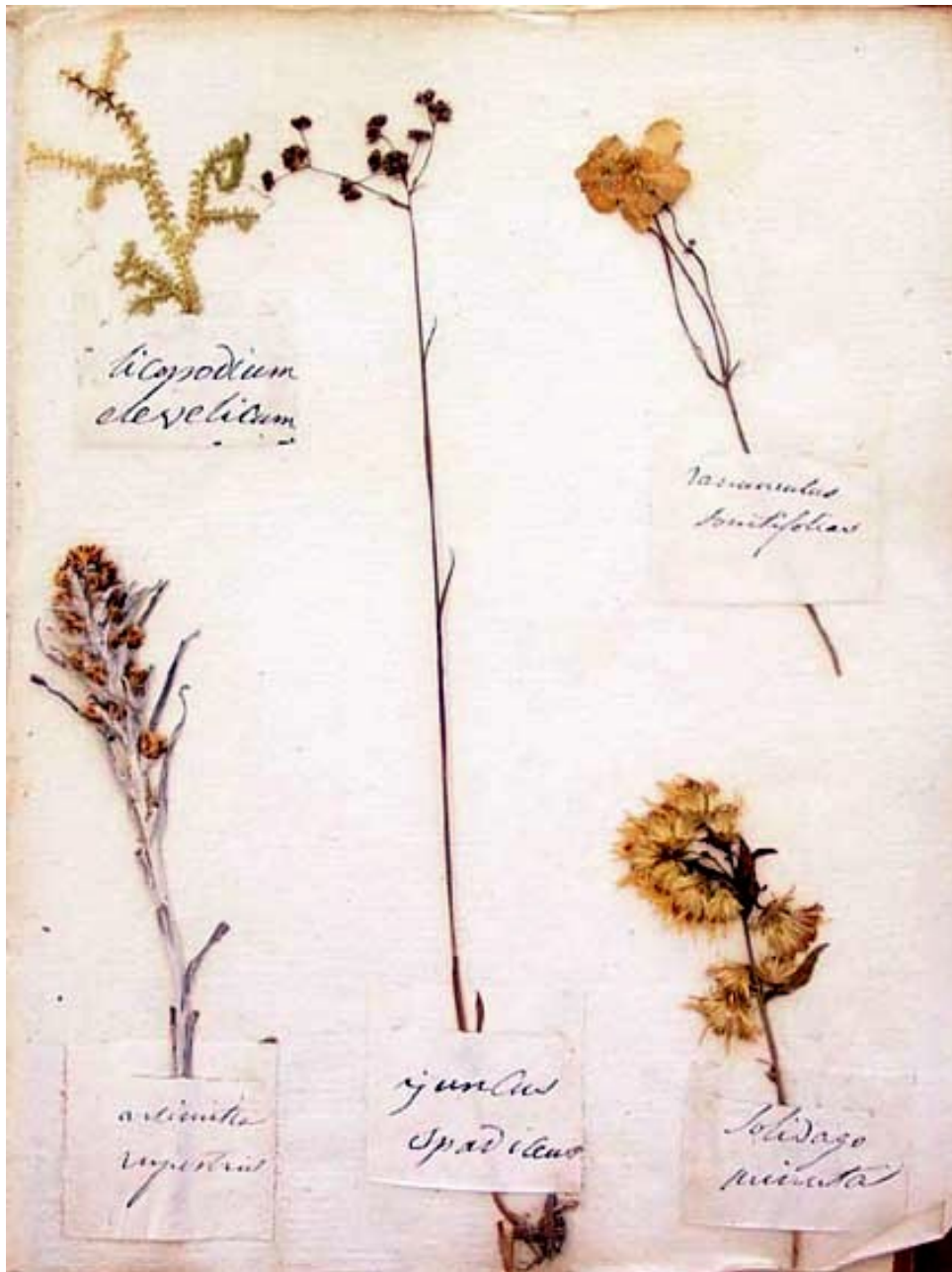
CROZIER 7

- Lichen cornulus
- Senecio incanus
- Euphrasia officinalis
- Lycopodium alpinum
- Juncus trifidus



CROZIER 8

Aster alpinum
Gnaphalium diascum
Rododendrum ferrugineum
Trollius europaeus
Soldanella alpina



CROZIER 9

Lycopodium elevaticum
Ranunculus sonitifolius
Artemisia rupestris
Juncus spadicus
Solidago minuta



CROZIER 9a

Alchemilla alpina
Gentiana alpina
Dryas octopetala
Astrantia major
Primula farinosa



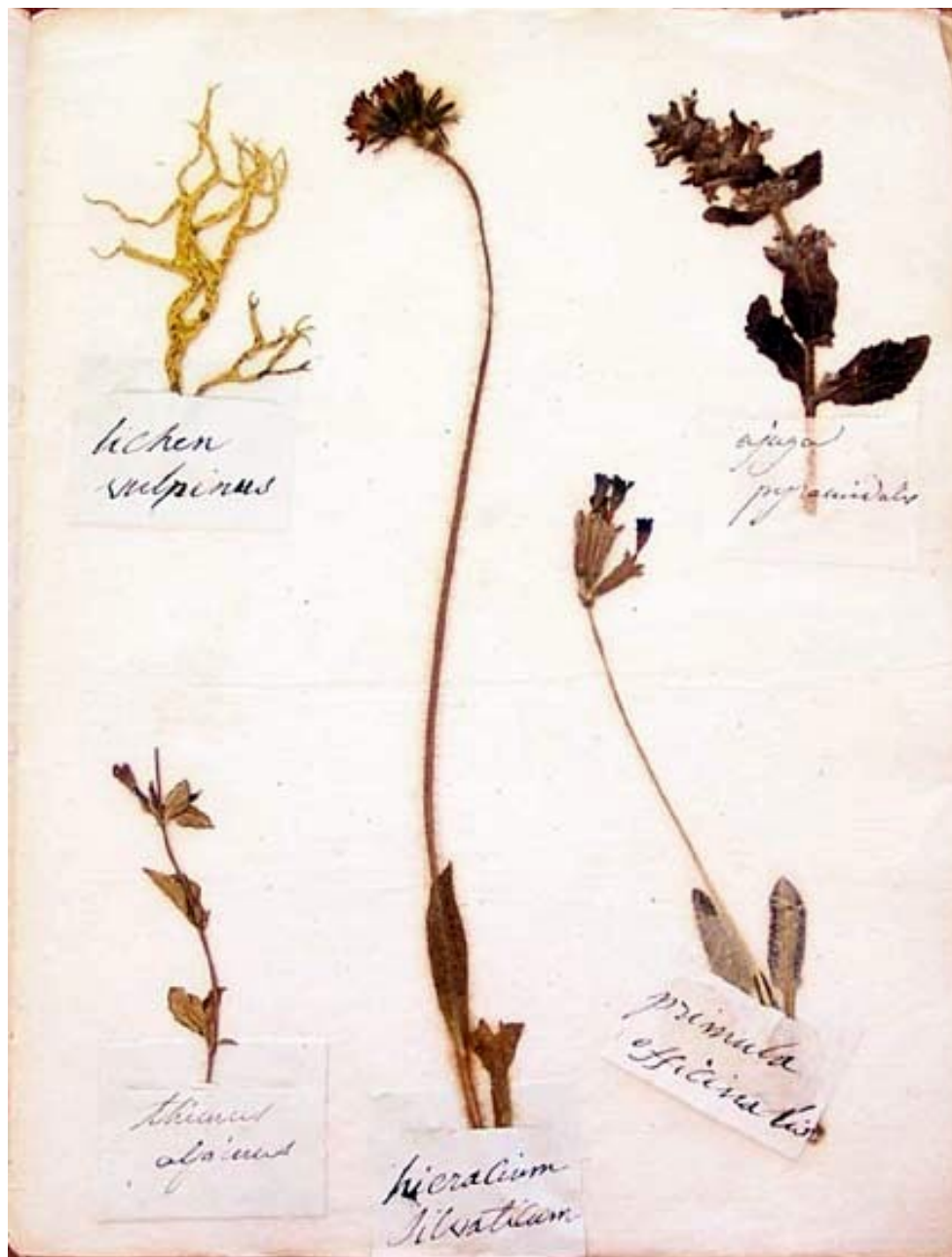
CROZIER 10

Saxifraga brioides
Lycopodium filago
Asplenium tricomanoides
Juncus aristatus
Silene rupestris



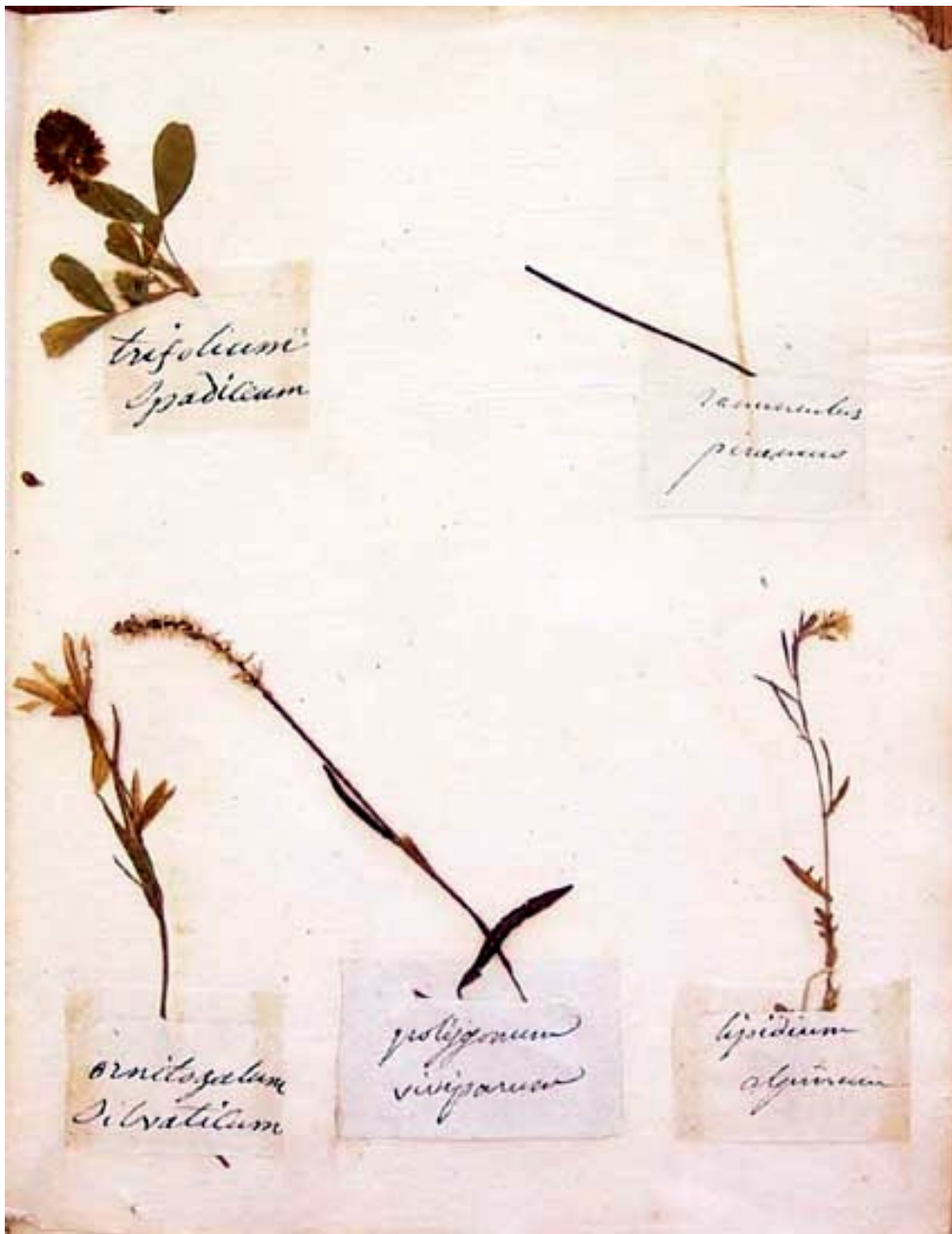
CROZIER 11

Potentilla aurea
Antirrhinum alpinum
Pedicularis palustris
Lycopodium spicam
Osmunda crispa



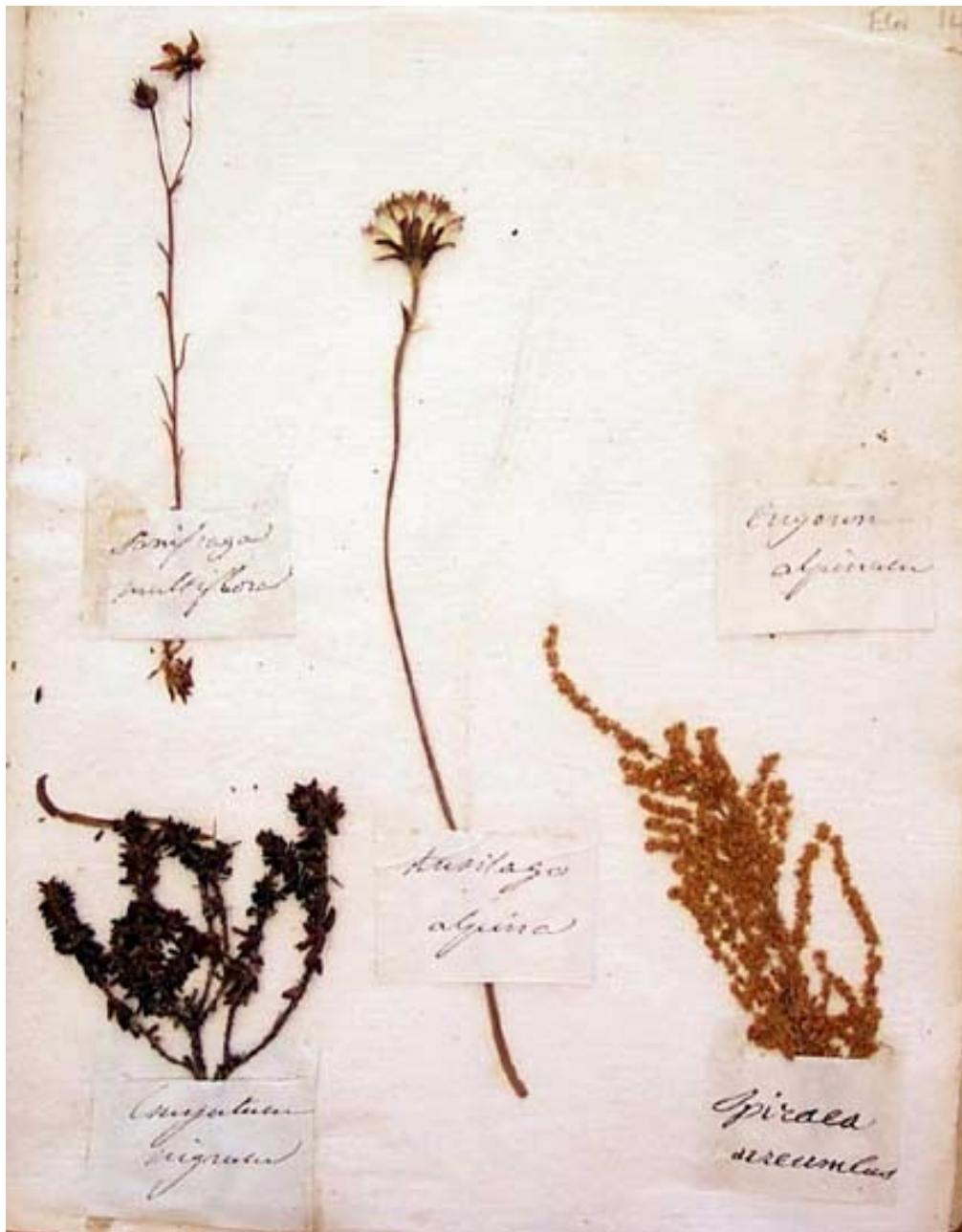
CROZIER 11a

Lichen vulpinus
Thymus alpinus
Hieracium silvaticum
Primula officinalis
Ajuga pyramidalis



CROZIER 12

Trifolium spadiceum
Ornithogalum silvaticum
Polygonum viviparum
Lipidium alpinum
Ranunculus piraneus



CROZIER 13

- Saxifraga multiflora
- Erigeron alpinum [specimen missing]
- Empetrum nigrum
- Spiraea aureumulus
- Tussilago alpina



CROZIER 14

Lycopodium elevatum
Gentiana bavaria
Crocus vernus
Saxifraga pyramidalis
Erinophorum polistachium



CROZIER 15

Polygala vulgaris
Centaurea cianus
Carex foetida
Myosotis scorpioides
Saxifraga stellaris



CROZIER 16

Pedicularis verticillata
Astrantia minor
Briza media
Trifolium alpinum
Artemisia mutelina



CROZIER 17

- Parmatia palustris
- Juncus niveus
- Epilobium latifolium
- Lotus corniculatus [specimen missing]
- Erigeron acre [specimen missing]
- Stipa penata [specimen missing]